

L.V. & M.V. SWITCHGEAR  
 FACTORY AUTOMATION SYSTEM  
 POWER DISTRIBUTION

## COMPANY PROFILE & PRODUCT CATALOGUE

2024



**A**utomation & control sales dept. / Hotline : +880 1715 198 443  
**B**reaker & switchgears sales dept. / Hotline : +880 1711 548 558

**H**eadquarter / E-mail: alobitan1@gmail.com  
[http:// www.alobitanbd.com](http://www.alobitanbd.com)

# ABOUT US

**Alo Bitan** is a power and electrical engineering companies in Bangladesh Since 1988. We have a group of professionally experienced engineers for solution of motor control panel, power distribution & factory automation equipment's Switch Gear, Metering, Measurement, PLC, Inverter/VFD, Electric Panel & Complete Sub-Station.

**Alo Bitan** is an authorized distributor of some world famous Brand in Bangladesh among them **ABB, Hitachi, Shihlin, Mikro, Frako, Rishabh, Panasonic, Selec Etc.** Alo Bitan has already setup a reputed brand image in the consumers mind over 36 years successful operation in Bangladesh.

Our belief one satisfied client leads to another & a pro-active multi discipline & constructive approach has added much to growing list of clients & stablishment of long lasting business relation as a trustworthy partner for growth.

It will always be a advantage for us to give our very best in offering value-added services with essential stock of equipment, accessories & above all-a reliable, trusted & dependable work force.

## Corporate Vision



## BUSINESS UNIT



## Organogram



**Mr. Helal Uddin**  
Founder



**Mr. Afsar Uddin**  
Director & CEO



**Sakil Ahmed** Manager Shihlin | **Mr. Julhas** Manager Alo Bitan | **Rasel** Manager Ayesha | **Humayun** Manager Commercial | **Shaheenur** Sr. Manager Commercial Sales | **Mr. Sumon** HR & Admin | **Engr. Sazzad** Manager Sales | **Engr. Shahin** Head of Sales | **Engr. Sohel** Head of Technical | **Engr. Obaydur** Project & Planning | **Engr. Khalil** Manager Factory

## Message from Director

Our honorable founder **Mr. Helal Uddin Helu** has made significant contribution ever since Alo Bitan was established in the year 1988. With his electrical & technical expertise, Alo Bitan has risen on the progress graph with unprecedented growth. Many feathers have been added to our basket with renowned and prestigious clients by his commitment and technical support. A total of 60+ staff are working with full dedication & commitment by his guidance. We believe without his conurbation we can't reach that milestone position. He is my Father and he passed away to the almighty in 2021. His Policy, commitment, discipline & honesty is our inspiration. His ideal always will be live in us & help us to move forward.



**Mr. Helal Uddin**  
Founder

A thorough technocrat above the ordinary, **Mr. Afsar Uddin Ananda**, ever since he joined Alo Bitan in 2005 has undoubtedly proved his versatility in furthering cordial technical expertise and developing applications. Our feature strategy to look forward for a sustainable & innovative technology for our next generation. We are also taking initiatives to explore technology to our customers through intensive training program. We also believe that customer feedback will also contribute in our improvement of the company. In practical Alo Bitan is moving to expand our activities to production in a big scale for Power Distribution, LV Switchgear, Industrial Automation & other related products in our factory. We are also developing R&D for energy management & products study.



**Mr. Afsar Uddin**  
Director & CEO

### **Why Alo Bitan**

**Quality** : We are committed to our customer for quality products & prompt service.

**Business strategy** : We have ensure business excellence for a long time & trusted to provide a full range of engineering & electrification related product service.

**Wide range of variety** : Ao Bitan delivered Engineering service & offer wide range of Electrical, Mechanical, Automation & Control System for industries.

**Warranty & Return Opportunity** : Alo Bitan always working hard to solve any problem you might have of our products. We offer a manufacturer level warranty of our supplied product that you can enjoy tension free happy purchase.



# A Single Window Connection for Every Electrical Installations



**HITACHI**  
Inspire the Next



**Mikro**



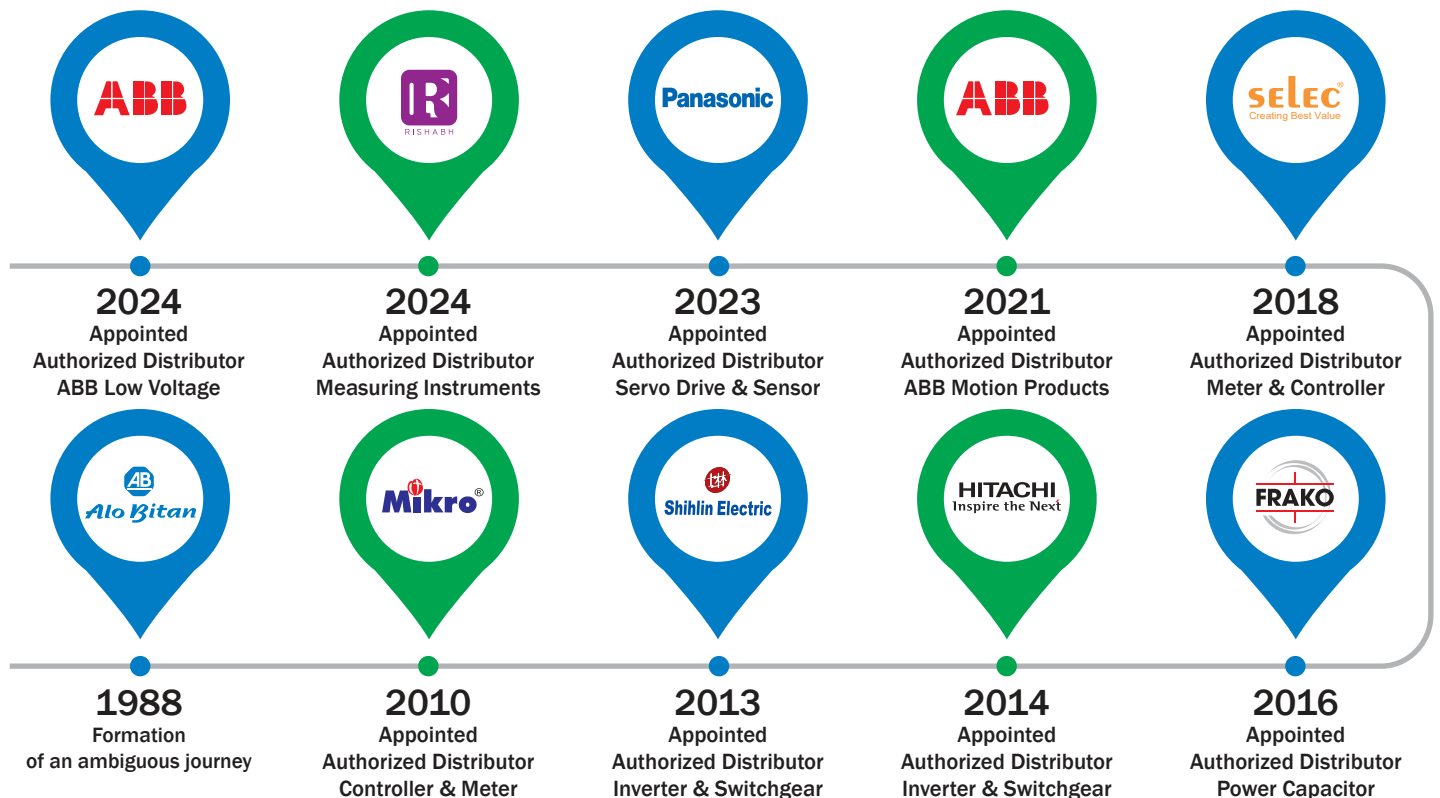
**Autonics**  
Sensors & Controllers

**Panasonic**  
Servo Drive

**NOJA POWER**  
Empower the world.



## OUR MILESTONES



# Authorized Distributor



**HITACHI**  
Inspire the Next  
Japan

**ABB**  
Electrification Products  
ITALY, GERMANY

**Shihlin Electric**  
Taiwan

**Mikro**  
Malaysia

**FRAKO**  
Power Capacitor  
Made in Germany

**Autonics**  
Sensors & Controllers  
Korea

**UMS**  
MCB, RCCB  
Malaysia

**SAMWHA**  
Power Capacitor  
Korea

**SELEC**  
Measuring Instrument  
India

**Panasonic**  
Servo Drive  
Japan

**RISHABH**  
India

**LUMEL**  
EVERYTHING COUNTS

**SKN-BENTEX GROUP**  
Motor Starter  
India

**E/NTES**  
Measuring Instrument  
Turkey

**Kumanical**  
Kumanical Industrial Automation  
Cooling Fan  
China

**HPL**  
Switchgears  
India

**NOJA POWER**  
Empower the world.  
Australia

# SUPPLIER

**Schneider Electric**  
Electrification Products  
France

**HAVELLS**  
Change Over, DB  
India

**BIM**  
Rotary Switch  
Taiwan

**HENGZHU**  
Panel Lock  
China

**EPCOS**  
Capacitor  
India

**TRAFOTELETTO**  
endless transformation

**GRUNDFOS**  
Pump, Denmark

**PHOENIX CONTACT**  
Connector, SMPS  
Germany

**DSE**  
Controller  
UK

**DEIF**  
Controller  
Denmark

**OMRON**  
Industrial Automation  
Japan

**SUNTEX**  
Instrument  
Taiwan

**ROCKWILL**  
ABS, Isolator  
China

**sfim**  
Meter, CT  
China

**Pilot**  
Split Core CT  
China

# PRODUCT OFFERING

**HITACHI**

VFD & MCB

**Shihlin**

VFD, MC & MCCB

**ABB**

Switchgears

**ABB**

Drives & Motor

**ABB**

Switch, DB Box & MCB

**Panasonic**

Servo Drive

**LUMEL**

Meters & Data Logger

**Mikro**

IDMT Annunciator

**SAMWHA**

Power Capacitor

**FRAKO**

Power Capacitor & Controller

**Autonics**

Sensor & Controller

**SELEC**

Meter & Timer

**RISHABH**

Transducer & Isolator

**SKN-BENTEX GROUP**

Manual Star Delta Starter

**NOJA POWER**

Automatic Circuit Recloser

# Capacity

**36+ Years of Experience**

**30,000+ Customers Served Till Date**

**5000+ Product**

**60+ Team Members**

**25,000+ Sq. Ft. Warehouse**

**15+ Bangladesh Industrial Clusters**

**Top 15+ World Class Brands**

**15+ Sales Engineer**

# Capability

We are covering market Segment wise focus with customer-centric solutions

**Builders**

**Panel Builder**

**Retail Channel**

**Sub Distributor**

**Projects**

**Projects Consultant**

**Project Contractor**

**System Integrators**

**Industrious**

**Machine Manufacturer (OEM)**

**Service Team**

**End User**

# Commitment

**Product Selection**

**Timely Delivery**

**Best Price**

**Credit Support**

**After Sales Support**

**Product Training**

**Warranty Support**

**Installation Support**

# Award & Achievement



**ABB**

**Certificate**  
Authorized Channel Partner

This is to certify that **Alo Bitan** Dhaka has been appointed as a Channel Partner of ABB India Limited to sell Low Voltage Motors in Dhaka with effect from January 01, 2024, subject to the terms of appointment.

This certificate is valid till: December 31, 2025.

**Yogesh Shukla**  
Sales Director - Channel Management  
Mumbai Business Area  
ABB India Limited

Ref: ABB/AA/031224 Date: 3<sup>rd</sup> November 2024

**CHANNEL PARTNER CERTIFICATE**

This is to certify that **Ananta Automation** having its registered office at 28, Dikusha Center (5<sup>th</sup> Floor), Dikusha CA, Motihari, Dhaka, Bangladesh appointed as Channel partner of ABB Limited, Bangladesh to sell ABB make MCCB, MCC, MCCB, ACB, Magnetic Contactor and Switch & Sockets with effect from 3<sup>rd</sup> November 2024. Subject to the terms of appointment, this certificate is valid till: 31<sup>st</sup> October 2025.

Thanking you.

For and on behalf of ABB Limited

**Subrata Ku Day** (Director) **Md. Muthukale Alam** (Head of Finance)

**Shihin Electric**

**2024**

**Distributor Agreement**

Representative: **ALO BITAN**

2024 Shihin Electric Authorized Distributor of Low Voltage Switchgear In Bangladesh

Group President: *[Signature]*

**HITACHI**  
Inspire the Next

23 Nov 2023

**ALO BITAN**  
131, B.C.C. ROAD,  
NAWABPUR, DHAKA  
1100 BANGLADESH

Attention: Mr. Ananda

Dear Sir,

This is to certify that **ALO BITAN**, of 131, B.C.C. ROAD, NAWABPUR, DHAKA, 1100 BANGLADESH is our authorized distributor to sell, market, distribute and service Hitachi Inverter & Switches in Bangladesh.

This Letter of Appointment remains valid until 30<sup>th</sup> Sept 2024.

Thank you

Yours truly,

*[Signature]*  
Anthony Ng  
Deputy General Manager  
ICE Group  
Hitachi Asia Ltd.

Hitachi Asia Ltd.  
Office: 30 Pioneer Crescent #15-15 West Park Biscuit Singapore 628592  
Bangladesh: 28 Pioneer Crescent #05-10 West Park Biscuit Singapore 628592  
Tel: 65 635 1400 Fax: 65 635 7401  
Company No: 199904162  
http://www.hitachi.com

**Mikro**  
MIKRO SDN. BHD. (Co No. 42348B-T)

No. 1, Jalan TP 777, Sime UEP Industrial Park,  
40400 Shah Alam, Selangor D. E., Malaysia  
Tel: 603-5192 7165 Fax: 603-5192 7166  
E-mail: mikro@mikro.com  
Website: www.mikro.com

Our Ref: YSC/001223  
Date: 1 September, 2023

**LETTER OF DISTRIBUTORSHIP**

With reference above, we MIKRO SDN. BHD., would like to inform that MS ALO BITAN having Corporate address at 131, B.C.C. Road, Rama Electric Market (2nd Floor), Dhaka-1100, Bangladesh is our retail dealer for PFR (Power Factor Regulator) and Capacitors.

This appointment will expire on 31st August 2024, unless be withdrawn prior to the expiry date, and this appointment is subjected for further yearly renewal.

Thank you.

Yours faithfully,  
Mikro Sdn Bhd  
*[Signature]*  
T S Chan  
Sales & Application Manager

**FRAKO**  
Kondensatoren- und Anlagenbau GmbH

ALD BITAN  
131, B.C.C. Road  
Rama Electric Market (2<sup>nd</sup> Floor)  
Dhaka-1100  
Bangladesh

Letter of Authorization

To whom it may concern:

Herewith please accept this as written confirmation that ALO Bitan (full address above) is our authorized dealer for Power Capacitor and Power Factor Controller in Bangladesh.

Alo Bitan shall be fully supported by our Distribution Center SEA in Singapore, operated by Jean Musler, SEA Pte. Ltd.

This Letter of Authorization shall be valid and remains valid until 31<sup>st</sup> December 2024.

*[Signature]*  
Dr. Matthias Behrmann  
Managing Director

*[Signature]*  
Alo Sales Manager

**Certificate of Distributorship**

Presented to: **ALO BITAN**

This is to certify that you are an authorized distributor of Panasonic Servo Motor products in the territory of Bangladesh.

Terms of Validity: 01/04/2024 - 31/03/2027  
Issued on: 05/7/2024  
Approved and issued by: **Panasonic Industry Sales Asia Pacific**

*[Signature]*  
M/Akira Kase  
Managing Director  
Panasonic Industry Sales Asia Pacific

**Panasonic**

**LUMEL**  
EVERYTHING COUNTS

**CERTIFICATE OF DEALERSHIP**  
This is to certify that **M/S Alo Bitan**.

Is an authorised Channel Partner of for Products manufactured by Lumel SA, Poland

Area of Operation - Bangladesh

Valid up to 31<sup>st</sup> March 2025

*[Signature]*  
Narendra Gollia  
Chairman & Managing Director

**NOJA POWER**

Manufacturer's Authorization Letter

We, **NOJA POWER SWITCHGEAR PVT LTD**, 16 Archimedes Place, Musorie Qd 4172, Australia, who are official manufacturers of **SELEC** Series Switchgear, being factories at 16, Archimedes Place, Musorie Qd 4172, Australia, do hereby authorize **Alo Bitan Industrial Electrical Distribution & Automation**, 131, B.C.C. Road, Rama Market (2nd Floor), Hameedpur, Dhaka-1100, Bangladesh to supply the following Goods, manufactured by us **35KV Automatic Circuit Breaker**.

We hereby extend our full guarantee and warranty as stated under NOJA Power Switchgear standard warranty terms with respect to the Goods offered to by **Alo Bitan Industrial Electrical Distribution & Automation**.

Authorized representative(s) of the Manufacturer  
Signed:

*[Signature]*  
Name: **Rudy Chan**  
Title: **Business Development Manager - Asian Region**  
Address: 12 Seletia Road, Marine, Qd 4172, Australia  
Phone: +61 7 3907 8777  
Fax: +61 7 3908 8777  
Email: [RudyC@nojapower.com.au](mailto:RudyC@nojapower.com.au)  
Duly authorized to sign this Authorization on behalf of: **NOJA Power Switchgear Pty Ltd**  
Dated on 24<sup>th</sup> day of March 2023

**NOJA POWER**

**SELEC**  
Creating Best Value

This is to certify that **M/s. Alo Bitan** is the Authorized Dealer for Selec brand of products in **Bangladesh**

All products sold by them are covered under standard warranty of one year

Y Meters Y Power Factor Controllers Y CTs Y Protection Relays  
Y Time Switches Y Timers Y Counters Y Temperature Controllers  
Y Process Indicators Y PLCs & HMI Y VFDs Y Aluminium Enclosures

*[Signature]*  
Samir Kati  
Managing Director

Valid from 2023 to 2024

**RISHABH**

**CERTIFICATE OF DEALERSHIP**  
This is to certify that **Alo Bitan** is an Authorized Channel Partner of **RISHABH INSTRUMENTS LIMITED** Area of Operation - Bangladesh

Valid up to 31<sup>st</sup> March 2025

*[Signature]*  
Narendra Gollia  
Chairman & Managing Director

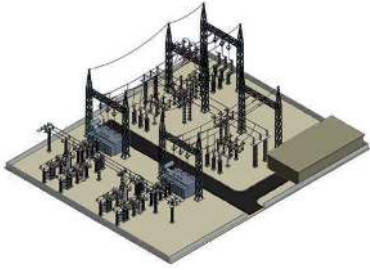
**CHANNEL PARTNER**

**SKN** Dealer's Certificate **SKN-BENTEX GROUP ELECTRICAL DIVISION**

We are pleased to appoint **ALO BITAN** BANGLADESH as Authorized Dealer/Distributor for Sale & Service of **BENTEX-BENTEN** range of products for the period of 1st April, 2023 to 31st March, 2024.

**Bentex Control & Switchgear Co.**  
100, 100/1, 100/2, 100/3, 100/4, 100/5, 100/6, 100/7, 100/8, 100/9, 100/10, 100/11, 100/12, 100/13, 100/14, 100/15, 100/16, 100/17, 100/18, 100/19, 100/20, 100/21, 100/22, 100/23, 100/24, 100/25, 100/26, 100/27, 100/28, 100/29, 100/30, 100/31, 100/32, 100/33, 100/34, 100/35, 100/36, 100/37, 100/38, 100/39, 100/40, 100/41, 100/42, 100/43, 100/44, 100/45, 100/46, 100/47, 100/48, 100/49, 100/50, 100/51, 100/52, 100/53, 100/54, 100/55, 100/56, 100/57, 100/58, 100/59, 100/60, 100/61, 100/62, 100/63, 100/64, 100/65, 100/66, 100/67, 100/68, 100/69, 100/70, 100/71, 100/72, 100/73, 100/74, 100/75, 100/76, 100/77, 100/78, 100/79, 100/80, 100/81, 100/82, 100/83, 100/84, 100/85, 100/86, 100/87, 100/88, 100/89, 100/90, 100/91, 100/92, 100/93, 100/94, 100/95, 100/96, 100/97, 100/98, 100/99, 100/100

## Substation Design, Installation, Testing and Commissioning



- Site Survey and Single Line Diagram Design
- Layout Design
- Project Schedule preparation and complete set of execution of all kind of work
- Consultancy, Drawing and Requirement to Connect With Transmission Line
- Earthing/ Grounding System Design (IEEE-80)
- Equipment Specification Check

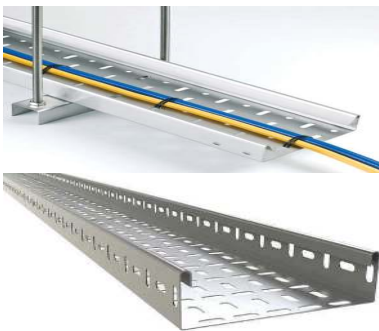
## CABLE TRAYS & SUPPORT SYSTEMS

We offer complete range of Cable Tray & Cable management systems

- Mesh cable tray systems
- Ladder systems
- Perforated cable tray systems
- Unperforated cable tray systems
- Module System
- Mounting systems
- Fastening systems
- Cable ladder systems
- Wide span systems
- Luminaire support systems
- Modular systems
- Stainless steel systems
- Raceways



## Cable Laying



ALO BITAN'S cable laying services extend to both overhead and underground trenches with a wide range of operating voltages that guarantee safety, reliability and trouble free service for years to come

## SERVICE CUM TRAINING CENTRE

We provide component level repair for:

- > AC/DC drives of any make and any rating
- > CNC, Servo drives with CCU TFT module
- > Control cards and display cards of all machines

Our repairing centre at ALO BITAN is a high-end, state-of-the-art facility equipped with latest technology tools to repair AC drives and other automation products in minimum time.

Every product is tested on load at our test bench after being duly repaired to ensure that the production at the site does not suffer due to the same fault.

Our engineers and technicians are fully trained to use the latest technology for testing & repairing.







Certified Service Engineers



Onsite Service



Genuine Spare Parts



### Professional VFD-Inverter Repair Service AC Drives and DC Drives

Our established inverter team routinely repairs AC variable speed Drives from 0.37kw up to 500kw and above. We also repair DC Drives from 0.5kw to over 300kw.

We have the capabilities to repair all types of industrial drives. Our repairing store is the best field to service or repair your industrial machinery parts with good electric repair needs for Professional VFD-Inverter Repair Service. Our repair team is well expert and skill to repair PLC, Inverter, HMI, Servo, and other good automation machinery parts.



### Panel Service

Alo Bitan offer customs Build low voltage Panel design and delivery also can repair of power and Motor Control Center Panel as per requirement & give cost effective solution with safety, reliability and aesthetic design.



### Power Factor Improvement Service

ALO BITAN offer capacitor panel is accurate so that customers can avoid penalties for inefficiency in utilization Vs Supply.



http://circuit-breaker.seec.com.tw  
E-mail:b.export@seec.com.tw



**Shihlin Electric**

**AB Alo Bitan**

No.1 ELECTRIC COMPANY

TAIWAN



**SS2 Series VFD**  
3-Ph 220V, 0.4 - 3.7kW  
3-Ph 440V, 0.4 - 5.5kW



**SC3 Series VFD**  
3-Ph 220V, 0.4 - 3.7kW  
3-Ph 440V, 0.4 - 5.5kW



**SE3 Series VFD**  
3-Ph 220V, 5.5 - 15kW  
3-Ph 440V, 5.5 - 22kW



**SA3 Series VFD**  
3-Ph 220V, 5.5 - 15kW  
3-Ph 440V, 5.5 - 355kW



**SF3 Series VFD**  
3-Ph 440V, 5.5- 355kW



**Braking Unit**  
BKU Series 45kW, 160kW



**SDH Series Servo**  
3-Ph 230V, 100W - 7.0kW



**SDP Series Servo**  
3-Ph 240V, 50W - 7.0kW



**DC Reactor**



**PLC**  
**AX3GA series**



**HMI**  
**EC200 Series**



**Temperature Controller**  
WT Series PID



Air Circuit Breaker



Vacuum Circuit Breaker



Molded Case Circuit Breaker



Magnetic Contactor



Starter



Automatic Transfer Switch



Thermal Overload Relay



Capacitor Switching Contactor Counter



Miniature Circuit Breaker/  
Manual Motor Starter



Relay & Base



Digital Power Meter



Residual Current Circuit Breaker (RCCB)  
Surge Protection Device (SPD)



Panel : 3P HV & LV 780 Sets



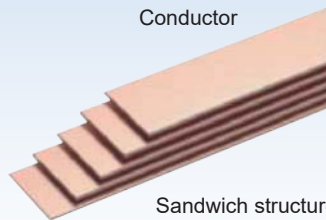
Cast Resin Transformer Dry Type

## BUSWAY

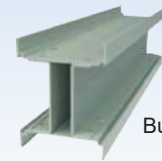


Low impedance sandwich busway

Conductor



Sandwich structure



Busbar shell

Joint stack connector



Tap off box



L Edgewise Elbow



Used to Change the horizontal direction of busbar line

L Flatwise Elbow



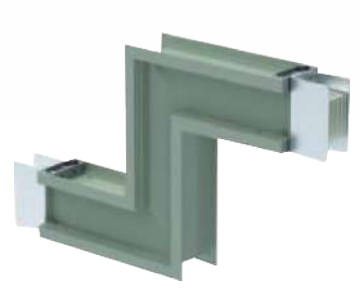
Used to change the vertical direction of busbar line

Z Edgewise Elbow



Used to bypass obstacles or change the horizontal direction of busbar line

Z Flatwise Elbow



Used to bypass obstacles or change the vertical direction of busbar line

T Flatwise Elbow



Used to increase the vertical branch of busbar line

Special Elbow



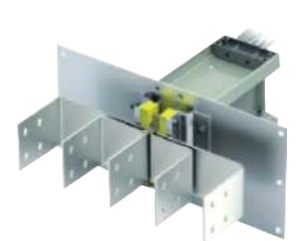
Used to bypass obstacles or change the busbar line layout direction.

Special Elbow



Used to bypass obstacles or change the busbar line layout direction.

Flange End



The flange end & flange end box can be matched with any type of switchgear transformer, & the user can determine the distance between the flange and according to the needs.

# Energy Efficient Motors

## High Efficiency Concept

Losses split into five major areas

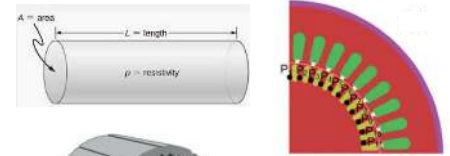


## Decreasing the losses in Energy Efficiency motors

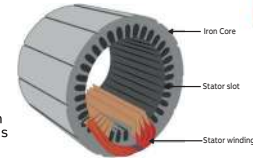
- Stator copper loss
- Rotor conductor loss

$$R = \frac{\rho L}{A}$$

$\rho$  = resistivity  
 $L$  = length  
 $A$  = cross-sectional area



- Iron loss – Low loss electrical sheet steel  
Lamination thickness



- Friction and windage losses – Optimally designed fans and bearings
- Stray load losses – Minimising overhand length  
Improved manufacturing process  
Optimized slot geometry  
Uniform air gap

## Key Features :

- European Technology
- IE2 = High efficiency
- IE3 = Premium efficiency
- IE4 = Super premium efficiency
- IE5 = Ultra-premium energy efficiency
- Wide Range (0.18 - 5000 kw)
- Cast Iron Body
- Easy connection to Top Terminal Box
- Polyamide based Class F Insulation
- Suitable for all VFDs/ AC Drives
- Polyurethane paint
- Temperature Rise Class B (70 deg)
- IE3 efficiency class 96.0 according to IEC 60034-30-1:2014, IS 12615:2018



General performance motors



Permanent magnet motors



Smoke extraction motors



Increased safety motors



IE5 Increased safety Synchronous reluctance motors



Flameproof motors

### ACS355

Range :  
0.37 to 22 kW



#### Features :

- Optimized design for cabinet installations saves space and installation time.
- Wide range of fieldbus adapters available offer flexible connectivity.
- Vector control capable of running both asynchronous motors and permanent magnet motors.
- Simple and visual sequence programming to make independent and repeatable operation sequences.
- Pre-defined application macros for quick basic setup.
- Unified height and depth of the IP20 product family simplifies wiring in cabinet installations

### ACS560

Range :  
0.75 to 160 kW



#### Features :

- Coated circuit boards, colour coded I/O terminals, SIL3, PLe3 certified Safe Torque Off (STO)
- Ultra-fast commissioning with short cut menu icons without touching full parameter list.
- Built-in macros for many general-purpose applications such as fan, pump, mixer.
- Built-in Modbus RTU with one click configuration for quick PLC configurable fieldbus modules.
- Built-in EMC filters and DC choke for reduced network pollution for all range of load and longer cable lengths.

### ACS580

Range :  
0.75 to 500 kW



#### Features :

- Enclosure class IP00 as standard
- Easy installation, commissioning & maintenance with pedestal on wheels and ramp.
- Integrated safety including safe torque off (STO) as standard.
- Supports various motor types including induction and permanent magnet motors with USB connection
- Redundant fans that enable the process to run in part load even with one fan only running.
- Coated boards as standard
- Built-in choke as standard for input harmonics reduction
- EMC filter option as standard

### ACS880

Range :  
0.55 to 3200 kW



#### Features :

- Intuitive control panel and PC tool.
- Direct torque control (DTC) for precise open and closed loop control.
- Built-in safety features for simplified configuration.
- Communication with all major automation networks.
- Removable memory unit for easy drive commissioning and replacement.
- Energy optimizer and energy efficiency information for monitoring and saving energy.
- Designed for easy service



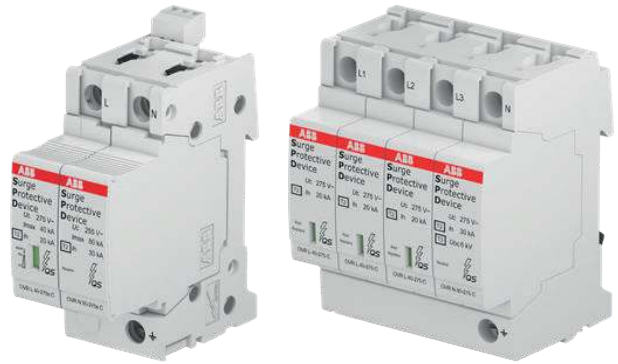
**Miniature Circuit Breaker**  
Range : 1P - 4P, 6A - 63A, 6kA



**Residual Current Circuit Breaker**  
Range : 2P/4P, 25A, 32A, 40A, 63A, 100A, 6kA



**Manual Motor Starter**



**Surge Protective Device**



XT1	XT2	XT3	XT4	XT5	XT6	XT7
25A-160A TMD	25A-160A Ekip	200A-250A TMD	200A-250A Ekip	320A-630A Ekip	800A Ekip	1000A-1600A Ekip

**Moulded Case Circuit Breaker**



E2.2 N/S	E4.2 N/S/H	E6.2 H/V
1000A-2500A 3/4P	3200A-4000A 3/4P	5000A-6300A 3/4P

**Air Circuit Breaker**



VD4 VCB 11kV (Fixed Type)  
630A-1250A, 25kA-31.5kA

VD4 VCB 11kV (Drawout Type)  
630A-1250A, 25kA-31.5kA

VD4 VCB 33kV (Drawout Type)  
1250A-2000A, 31.5kA

VD4 VCB 33kV (Outdoor Type)  
1250A-2000A, 31.5kA

**Vacuum Circuit Breaker**



AX09

AX80

AF140

AF750

IDMT Relay

**Magnetic Contactor**



Shunt Coil

UVT Coil

XT2-XT4

XT6 W BASE

Shunt Coil

UVT Coil

Gear Motor

Auxiliary Contact

Mechanical Interlock

**Accessories for MCCB**

**Accessories for ACB**



**Thermal Overload Relay**

**Industrial Plugs & Sockets**

**Push Button**

**Electromagnetic Flow Meter**



**Multi-Function Meter**

**Soft Starter**

**Lightning Protection**

**Capacitor**

### Busway Overview



### ABB Elegance Series Distribution Boards



MCB Distribution Board (SPN)  
MCCB Distribution Board (TPN LOAD LINE)

#### Technical Data

Standard: IEC 439-3 & BS 60439 part 1 & 3 Busbar type  
 Max. Load: 250 amps  
 Max. Voltage: 230 / 400 V ac, 50 / 60 Hz  
 Range: 4, 6, 8, 12, 16, 20 and 24 TP&N ways  
 12, 18, 24, 36, 48, 60 and 72 SP&N ways  
 Degree of protection: IP 41  
 Enclosure material: Cold rolled sheet steel Box  
 and Cover 1 mm (Aluzinc steel on request)  
 Enclosure finish: Gray, RAL 7035  
 Fault level: 35 kA

## Zenit

Premium Switches  
Made in Spain



## Millenium

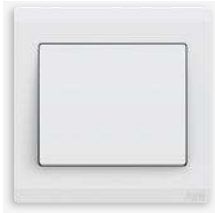
An element of sophistication  
Made in Spain



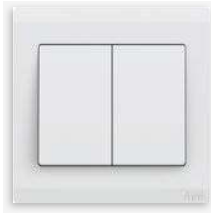


# Inora

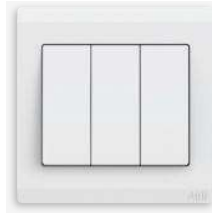
Simplicity for timeless design



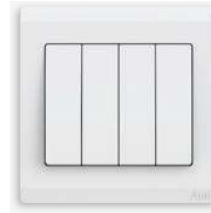
**Model : BL101**  
1 Gang 1 Way Switch



**Model : BL102**  
2 Gang 1 Way Switch



**Model : BL103**  
3 Gang 1 Way Switch



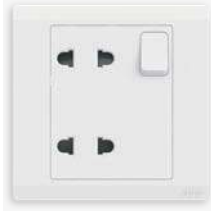
**Model : BL104**  
4 Gang 1 Way Switch



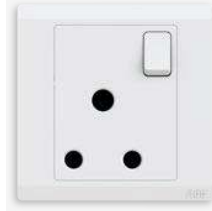
**Model : BL105**  
1 Gang 2 Way Switch



**Model : BL111**  
1 Gang 1 Way DP Switch  
With Marking "ON"



**Model : BL222**  
2 Gang 10a Euro-American  
Switched Socket



**Model : BL209**  
1 Gang 15A  
Switched Socket SP



**Model : BL224**  
1 Gang 13A  
Switched Socket SP



**Model : BL294**  
1 Gang 13A Switched  
Multi-Socket Outlet



**Model : BL429**  
1 Gang 1 Way Push Switch  
Marked Bell



**Model : BL301**  
1 Gang TV Outlet



**Model : BL321**  
1 Gang Telephone Outlet



**Model : BL318**  
1 Gang Data Outlet



**Model : BL422**  
Fan Regulator

# Concept BS

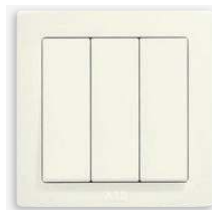
Naturally Aesthetic



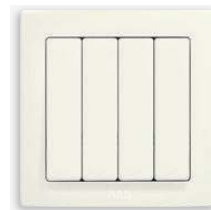
**Model : AC101**  
1 Gang 1 Way Switch



**Model : AC102**  
2 Gang 1 Way Switch



**Model : AC103**  
3 Gang 1 Way Switch



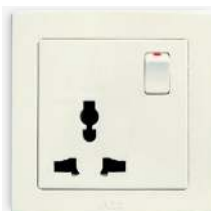
**Model : AC104**  
4 Gang 1 Way Switch



**Model : AC105**  
1 Gang 2 Way Switch



**Model : AC111**  
1 Gang 1 Way DP Switch  
20AX, with Marking "ON"



**Model : AC294**  
Socket Outlet, 13A



**Model : AC222**  
2 Gang Switched Socket  
Outlet, 10A, 2pin



**Model : AC224**  
BS SP Switched Socket  
Outlet, 13A, 3pin Flat



**Model : AC209**  
Switched Socket Outlet  
15A, 3pin Round



**Model : AC429**  
Push Switch with  
"Bell" Symbol, 10A



**Model : AC301**  
1 Gang TV Outlet



**Model : AC321**  
1 Gang Telephone



**Model : AC331**  
1 Gang Data Outlet



**Model : AC422**  
Fan Regulator

## Hitachi Variable Frequency Drive

**NEW**



### P1 Series

High Performance Inverter with High Starting Torque and Built-in VT, CT, SLV Control modes



### SH1 Series

Advanced Industrial Inverter for High Starting Torque and Built-in VT, CT, SLV Control modes



### LH1 Series

High-performance, easy access to all functions and versatile through multi mode operation



### PsH100 Series

high performance inverter



### WJ-C1 Series

Dual Rating Inverter for VT/CT application. Capable of Driving IM/PM Motors with Integrated Braking Circuit



### NES1 Series

Economical Inverter With Simple Operating to realize Optimal Performance for Energy Saving Application



### Hitachi Motors

0.4 ~ 160kW, 2,4,6 Pole  
200/400V, 50/60Hz



### Hitachi PLC



### Hitachi HMI

## Hitachi Low Voltage Components

**MCCB**  
15~4000A  
100% ICU=ICS



**ACB**  
**AKN/AKS**  
630A-6300A  
(65kA -120kA)



**MCB**  
1A-63A (6kA, 10kA)  
**ELCB**  
40A-63A  
(30mA, 100mA, 300mA)



**MAGNETIC CONTACT**  
HS Series H Series  
9A~50A (New) 9A~800A



**Compressor**  
**Oil Free Screw**  
Single Stage / Two Stage



**Thermal Overload Relay**  
TR12B~TR600B  
Range : Upto 600A



IEC  
STANDARD



**PFR 140 / 120 / 60**  
Power Factor Regulator  
Complies With Iec 61000-6-2 Standard



**MK 2200L**  
IDMT Relay  
RS485 Modbus-RTU



**External Plug-in Module NX-M1**  
PFR step extensible



**PFR 160 NX**  
Power Factor Regulator  
NFC Communication  
Complies with IEC 61000-6-4 standard



**MK 201A**  
Earth Fault Relay  
96x96mm IP54 Standard



**MK 1000**  
IDMT Relay  
96x96mm IP54 Standard



**NX 301A**  
Earth Leakage Relay  
96x96mm IP54 Standard



**NX 204A**  
Over Current Relay  
96x96mm IP54 Standard



**AN 112 / 120 / 128**  
Programmable Alarm Annunciator  
12, 20 or 28 Windows



**DIN 300**  
Earth Leakage Relay



**DPM 380**  
Digital Power Meter  
Modbus RTU Communication



**MU 250**  
Voltage Control Relay  
Din Rain Type



**Zero Phase Current Transformer**



# EPE BUSWAY SYSTEM, MALAYSIA

## EPE SERIES 1kV - 36kV

- LV SADBWICH
- LV MINI
- LV NSPB
- MV NSPB

Plug-In Box & Tap-Off Box



Flange End



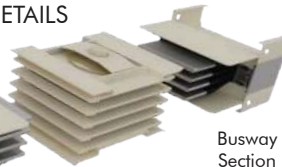
Feeder & Plug-In Busway



### JOINT DETAILS



Joint Balancer



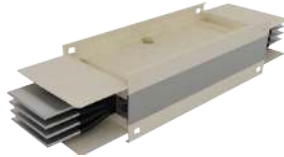
Busway Section



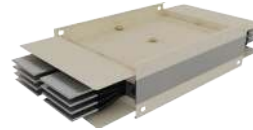
Vertical Offset



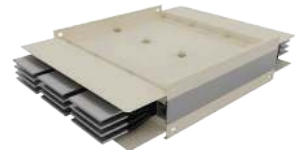
Horizontal Elbow



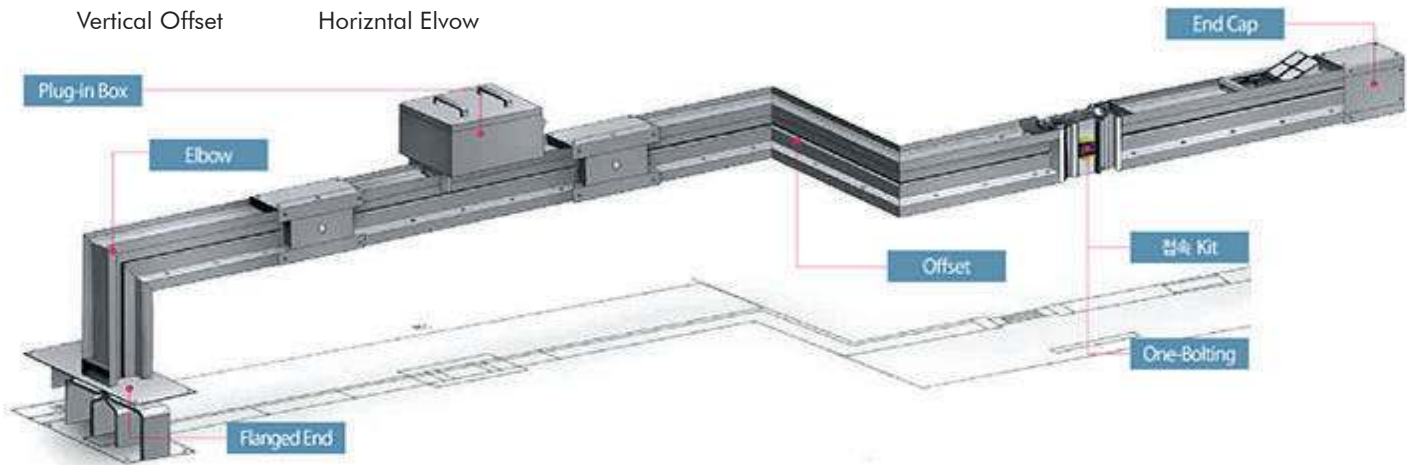
Single Stack



Double Stack



Triple Stack



## UNITED MS ELECTRICAL MFG. (M) SDN.BHD. (65814-V)

Lot 5, Batu 17<sup>1/2</sup>, Jalan Ipoh, Rawang Industrial Estate, 48000 Rawang, Selangor, Malaysia.  
Website : <http://www.unitedms.com.my>



1P/2P/3P, (6A-63A), 6kA  
Miniature Circuit Breaker (MCB)



2P (25A-63A) 30mA



4P (25A-100A) 30mA

Residual Current Circuit Breaker (RCCB)

### ① Oil Type High Voltage Power Capacitor

#### > Application

The Capacitors are designed for Power Factor corrector and harmonics filtration in power networks. They are all-film dielectric and impregnated with and environmentally friendly, Non-PCB Biodegradable insulating oil. In addition each capacitor each proved with an internal discharge register all SAMWHA Capacitors comply with most national & international capacitor standard.

- Capacitor benefits to**
- Improve Power Factor
  - Reduce Line Losses
  - Decrease Voltage Drop

Through that it helps greater **Energy Efficiency**

#### > Product Scope

- **Power Range** Single Phase 25 kvar to 1000 kvar  
Three Phase 50 kvar to 500 kvar
- **Voltage Range** Single Phase 1000V to 22000V  
Three Phase 1000V to 11000V
- **Frequency** 50Hz / 60Hz
- **Applicable Standards** IEC, AISI / IEEE, NEMA



### ② Oil Type Low Voltage Power Capacitor

#### > Application

Capacitors are intended for the improvement of Power Factor in low voltage power networks. Used advanced technology consists of metallized PP film with extremely low loss factor and dielectric system is self-healing. The dielectric system is self-healing and biodegradable and environmentally friendly. The capacitors have overpressure protection to disconnect it from the supply in the event of internal failure and at the end of its operational life. The construction described above and the use of high quality materials ensure reliability and longevity.

- Capacitor benefits to**
- Improve Power Factor
  - Reduce Line Losses
  - Decrease Voltage Drop

Through that it helps greater **Energy Efficiency**

#### > Product Scope

- **Power Range** 0.2kvar to 150kvar
- **Voltage Range** 220V to 1000V
- **Frequency** 50Hz / 60Hz
- **Applicable Standards** IEC, AISI / IEEE, NEMA



### ③ Dry Type Low Voltage Power Capacitor

#### > Application

Capacitors are intended for the improvement of Power Factor in low voltage power networks. Used advanced technology consists of metallized PP film with extremely low loss factor. The dielectric system is self-healing and has no liquid impregnant. Capacitor enclosed in cylindrical aluminium cases. The capacitors have overpressure protection to disconnect it from the supply in the event of internal failure and at the end of its operational life. The construction described above and the use of high quality materials ensure reliability and longevity.

#### > Product Scope

- **Power Range** 0.2kvar to 50kvar
- **Voltage Range** 220V to 1000V
- **Frequency** 50Hz / 60Hz
- **Applicable Standards** IEC, ANSI / IEEE, NEMA



# FRAKO Kondensatoren- und Anlagenbau GmbH

Power Capacitor

Reactive Power Control Relays

Power Factor Correction System



## FRAKO quality features:



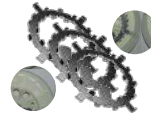
Patented tensioning spring terminal  
**Unique FRAKO feature**



Three-phase overpressure disconnecter  
Fluid-granulate filling material  
**Unique FRAKO feature**



Segmented MPP film  
**Unique FRAKO feature**



Patented contact rings  
**Unique FRAKO feature**

Frako Power Capacitor

Unique Feature



PFI Controller

**FRAKO** Kondensatoren- und Anlagenbau GmbH  
LKT 12,5-690-DP60  
K18-0664

Kvar	V/60Hz	A	Kvar	V/50Hz	A
12.5	690	10.5	10.4	690	8.7
9.9	615	9.3	8.3	615	7.8
9.5	600	9.1	7.9	600	7.6
8.5	570	8.6	6.0	570	7.2
7.2	525	8.0	5.0	525	6.6

3x23.2 μF +/-0.5% Ui 3.9/8 kV  
Temp.-cl.-40 + 60°C t<sub>c</sub> 75° c

protected 10 000 A  
not above 600 VAC

dry, non PCB

Overpressure disconnecter  
EN 60831 IEC 831/08.2003  
Made in Germany  
1312

**FRAKO** 01DLNT



Capacitor Duty Contact



Harmonic Reactor



Power Factor Correction System



BEN Series

BX Series



BJ Series

BS5-P Series



BRQM Series

BRQP Series

Photoelectric Sensor



PSAN Series

PSS Series

Pressure Sensor



Analog Timer



Pressure Transmitters



PRD Series

PRA Series



PSN Series

PRL Series



PR Series



CR Series

Proximity Sensor



Auto Door Sensors



Counter / Timer



Control Switch



TK Series



TZM Series



TCN Series

Temperature Controller



Rotary Encoder



SMPS



Panel Meter / Tower Light



**PRODUCT SELECTION GUIDE**

**Electrical Digital Panel Meters**



MFM384



EM368



VAF39A-1



MV334



MV305

**Protection Relay**



600 VPR



900CPR-3



MPR-3M

**Temperature Controller**



TC513



TC544C

**Power Factor Controller**



APFC-147-112



APFC-148

**Digital Hour Meter**



LT920A

**Panel Meters**



MA12

**Counter & RPM Meter**



XC10



XC2200

**Annunciator**



AN-8-0-0-230V

**Multifunction Display**



PIC101

**Relay Module**



RLYMD-2-S8

**ELR**



ELCTR35

**Current Transformer**



SPCT 100



SPCT 40

**PLC & HMI**



SP112-GT40



SP3-GT35

**Timer**



600XU



600DT



800XA

**Power Supply**



Frequency Drive



Solar On Grid Inverter



Advanced Static VAR Generators



Static Voltage Regulators



RPS240



TS2M1



55XU



**Industrial Control Products  
Test & Measuring Instruments**



ND45



NP45



CT Coil 5000A



NP10



ND30 IOT



SM61 IOT

**LUMEL IOT**



RISH CON-CA



RISH CON-I



RISH CON-CV

**TRANSDUCER & ISOLATOR**



RISH Xmer  
104/60P(45)



RISH Xmer  
225/167P(50)

**Current Transformer**



RISH LM1360



RISH EINE



RISH Master 3430

**DIGITAL PANEL METER**



RISH RELAY - AR



RISH RELAY - I



RISH RELAY - V

**PROTECTION & MONITORING RELAY**



TNC 2NO 2NC 60D -25A  
Line Currents with OFF, 4 Pos.-6A  
Phases to Neutral with OFF, 7 Pos.6A  
1-0-2 3ph3 pole -10A  
Auto-Off-Manual

**CAM SWITCHES**



RISH Clamp1000A



RISH Max 10

**DIGITAL CLAMP METERS**



**Oil Star Delta Starter**



**Manual Star Delta Starter**



16A

32A

**Changeover Switch & Dol Motor Starter**



**Change Over Switches Knife Type**



**Change Over Switch**



**Distribution Board**



**Accl Circuit Breaker & Cylindrical Capacitor**



**Change Over Switch & Load Break Switch**



Servo Motor 400W  
Drive 400W



Servo Motor 750W  
Drive 750W



Servo Motor 1000W  
Drive 1000W



Servo Motor 1500W  
Drive 1500W



Servo Motor 2000W  
Drive 2000W



Servo Motor 3000W  
Drive 3000W



HG-C Micro Laser  
Distance Sensors



HG-T Series - Digital  
Displacement Sensor



DP-100 Dual Display  
Digital Pressure Sensors



FP0-E16RS



FP7 Series



FP-XO L30R



ACB



Magnetic Contactor



Push Button & Pilot Light



Inverter



NSX

CVS

MCCB



Soft Starter ATS Family



Zelio RM Series Control Relay



Zelio RXM Relay



Zelio RUM Relays



HMI



Power Meter



PLC

# Power Factor Equipments & Panel Accessories

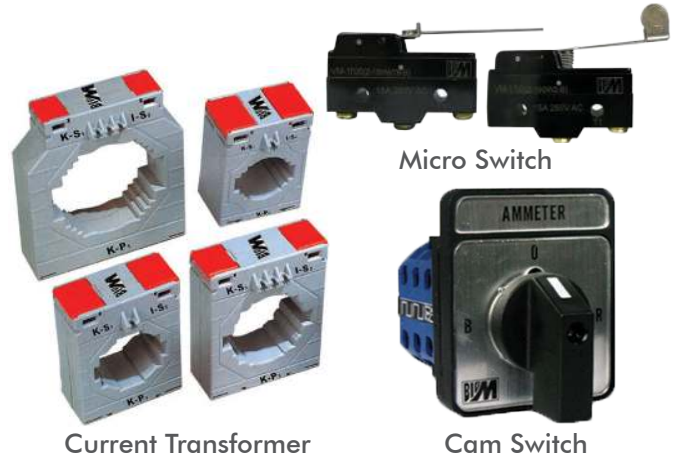


Power Capacitor

Controller

Reactor

**EPCOS**



Current Transformer

Micro Switch

Cam Switch

**BIGM**



Current Transformer

Meter

**SFIM**



Split core Current Transformer

**PILOT**

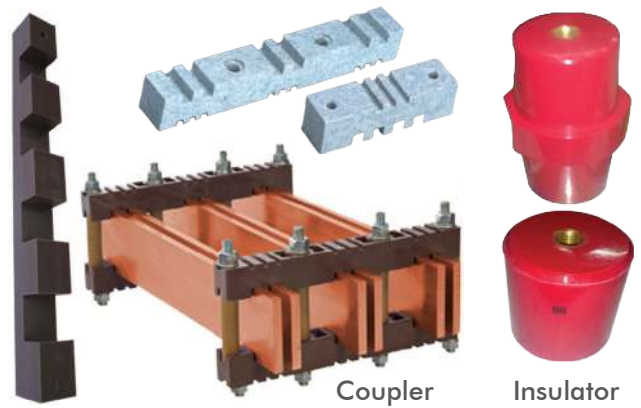


Fan Net

Cooling Fan

Fuse & Base

**KUMANICAL**



Coupler

Insulator

**BUSBAR**



Panel Lock

Handle

**HENGZHU**



**RT FUSE & BASE**

# Low Voltage Products



Industrial Automation

**OMRON**



DSE 8610 MKII

DSE8660 MKII

DSE331

DSE020

DSE9460

**DSE**



Pump

**GRUNDFOS**



AGC 150

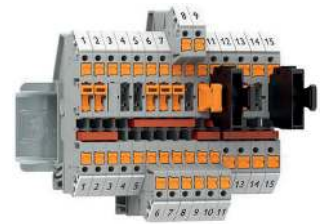


AGC

**DEIF**



SMPS



Terminal Blocks

**PHOENIX CONTACT**



Stabilizer

Power Filter

UPS Solutions

**DELTA**



PH 405-60 Sensor



WTW D.O. Sensor



ORP Transmitter



Dissolved Oxygen Transmitter

**SUNTEX**

# High Voltage Products



Noja ACR



ABB VCB 33kV (Indoor)



LA 33kV



ABB VCB 33kV (Outdoor)



ABS 33kV



Isolator 33kV



CT 33kV



PT 33kV



VCB 12kV



LBS 12kV



LBS 12kV



12kV Dropout Fuse



PT 12kV



CT 12kV



Fuse 12kV/33kV



12kV  
36kV  
Lightning Arrester



# SUB STATION EQUIPMENT

## HT SWITCHGEAR (LBS)



This protective equipment is used at 11 kV sub-station. The main Load Break Switch (LBS) mechanism is available for 630A & the over current protection scheme is done through HRC fuse. The panel includes 3 numbers of CT (Current Transformer) & 2/3 numbers of PT (Potential Transformer) for measuring system current & voltage respectively & 3 numbers of HRC Fuses for protection of overload. The scheme is so designed that if fault occurs in any phase it will isolate the whole three phases from the system instantly. The panel also includes 3 numbers of Ampere meters & one number of Voltmeter with selector switch for monitoring system current & voltage. The standard panel size is 900x900x1800 mm & weight is around 450kg.

## HT SWITCHGEAR (VCB)



### MAIN FEATURES

- ❑ Long maintenance free operation
- ❑ Fully metal clad design
- ❑ Horizontal isolation
- ❑ Bus bar system fully insulated
- ❑ Manual or motor charged main
- ❑ Closing mechanism
- ❑ Fully rated earth switches
- ❑ Complete set of interlocks and
- ❑ Padlocking facilities
- ❑ Isolatable voltage transformer
- ❑ Ample current transformer
- ❑ Ccommodation
- ❑ Extensive use tropical environments
- ❑ Safety interlock
- ❑ 20,000 Operations on vacuum breakers
- ❑ As latest IEC 62271 - 100 and -200 standards

## DISTRIBUTION BOARD (MDB)



### Low Voltage Switchgear

Alo Bitan offers switchboards fitted with low voltage circuit breakers in single and three phase configurations that can be used as motor control centres, power illumination CTC systems and distribution boards compliant with latest building regulations.

### Main Advantage:

- ❑ Compact, space-saving, side-by-side and easily installed.
- ❑ Flexible and versatile, easily adapted to a variety of applications.
- ❑ Safe and reliable and user friendly
- ❑ Reasonable prices for high quality service.
- ❑ Short response times, and quick delivery.
- ❑ Excellent sales support and full range of service solutions.
- ❑ Type-tested switchgear assemblies in accordance with IEC/EN 61439

## PFI PLANT



Power Factor of the system is degraded due to inductive load of different industries and big apartments. **Alo Bitan** manufacture PFI (Power Factor Improvement) Plant for improving the degraded Power Factor of the system. We have microprocessor based PFC (Power Factor Correction) relay up to 16 stages. The Capacitors we use are of different rating (2.5, 5, 10, 20, 25, 50 KVAR... etc) and corresponding Magnetic Contactor for suitable stepping of the Capacitor bank. Sometimes we also use detuned Reactor with the Capacitors for harmonic filtration of the system. The standard panel size is 600x600x1700 mm (single unit) and the weight is around 200 kg.

# Project Reference



LV Equipment & Measuring Instrument  
Walton Group



ABB Switch & Socket  
BRAC University - New Campus



Low Voltage Equipment  
Hazrat Shahjalal International Airport Terminal-3



2400 KVAR APFC  
Grameenphone Switch at Nobinogor, Savar



Low Voltage Switchgear  
NZ Group at Vulta, Rupgonj. Narayanganj



33KV 1250A & 800A Indoor Switchgear  
Famous Steel & Re-rolling Mills Ltd.



33KV 1250A Outdoor type VCB  
Safui Alam Steel Mills Ltd.



11KV 1250/630A HT Switchgear Panel  
Narayanganj Wasa



LT & 1200KVAR PFI Plant  
Naheed Group



Saidaabad Water Treatment Plant  
450KW VFD Panel



Low Voltage MCC Panel  
Far East Group



LT / MCC Panel  
Noman Group



LPS, OPR-60  
Saidaabad Water Treatment Plant



Relay Control Panel  
SAS Steel Mill



Low Voltage Switchgear  
Rajuk Utara Apartment Project - RUAP

# Project Reference



11/0.415 KV 1250 KVA Sub-Station  
Medicon Pharmaceuticals Ltd.



Main Distribution Board (MDB)  
Metrocem Ispat Ltd.



Low Voltage Switchgear with Bus-coupler  
Pretty Composite Textiles Industries Ltd.



11/0.415KV 2500KVA Transformer with OLTC  
Delsey Cotton Spinning mills Ltd.



Low Voltage Switchgear  
Far East Spinning Industries Ltd.



Motor Control Center (MCC)  
FKL Spinning Ltd.



Main Distribution Board (MDB)  
Danish Foods Ltd.



Motor Control Center by Star-Delta  
Habitus Fashion Ltd.



11/0.415KV 800KVA ABB Compact Sub-Station  
Elegant Square at Gulshan Avenue



33/11/0.415, 5000KVA Sub-Station  
Echoknits Ltd. at Kaliakair



13500A Low Voltage Switchgear  
Echotex Ltd. at Polli Biddut, Chandura, Gazipur.



11KV, 1250/630A, HT Switchgear Panel (VCB)  
Based & Sons Steel Re-rolling Mills At Kodomtoli



Low Voltage System with Early streamer emission  
Citizen Tower at Bir Uttam Mir Shawkat Sarak



Low Voltage MCC Panel  
Noman Group at Mulaid, Gazipur



Alo Bitan Factory

# Picture with Principal Suppliers



Alo Bitan Shop Founder Mr. Helal Uddin & His Son Mr. Afsar Uddin Ananda



Shihlin Electric People visiting Alo Bitan Chairman Mr. Helal Uddin



Mr. Afsar Uddin Ananda Director & CEO of Alo Bitan at Corporate Office



Mr. Afsar Uddin Ananda Director & CEO of Alo Bitan at Head Office



Alo Bitan & Shihlin Electric Shop



Alo Bitan Head Office, Dilkusha Center, Motijheel, Dhaka



Alo Bitan Machinerries Shop



Ayesha Electric Shop

# Picture with Principal Suppliers



Mr. Helal Uddin, Chairman & Mr. Afsar Uddin, CEO of Alo Bitan in a Business Tour of Hitachi Switch in Bangkok, Thailand



Mr. Helal Uddin, Chairman & Mr. Afsar Uddin, CEO of Alo Bitan in a Business Tour of Shihlin Electric in Taipei, Taiwan



Hitachi Singapore Office Visit-2023



Panasonic Singapore, Office Visit 2023



Hitachi Narashino, Japan Inverter Factory Visit-2018 by Alo Bitan with Customer.



Rishabh Nashik, Factory Visit 2023



Legrand Delhi, Switchgear Factory Visit 2022



Selec Mumbai, Factory Visit 2023

# Picture with Principal Suppliers



ABB Certificate Authorized Channel Partner for Alo Bitan



ABB Certificate Authorized Channel Partner for Ananta Automation



ABB SACE Italy, Factory Visit 2024



ABB S.p.A - Dalmine Italy & Frako Germany, Factory Visit 2024



ABB Bangalore, Factory Visit 2023



ABB Seminar on Motion Products, Kerala, India 2024



ABB Seminar at Dhaka Sheraton Hotel, 2024



Selec Mumbai, Factory Visit 2023

# Picture of Seminer



Hitachi Seminar Presentation by Alo Bitan Chairman Mr. Helal Uddin



Hitachi Seminar Presentation by Alo Bitan Director Mr. Afsar Uddin Ananda



ABB Seminar Presentation by Alo Bitan Director Mr. Afsar Uddin Ananda



Shihlin Product Seminar Presentation by Alo Bitan Director Mr. Afsar Uddin Ananda  
Seminar of Shihlin Electric Product 2017 at Hotel Fars, Bijoyagar, Dhaka



Seminar of Shihlin Electric Product 2017 at Hotel Fars, Bijoyagar, Dhaka



ABB Product Seminar 2024 at The Westin Dhaka, Gulshan, Dhaka.



Hitachi Product Seminar 2019 at The Westin, Gulshan, Dhaka



Shihlin Product Seminar 2019 at Lake Shore Hotel, Gulshan, Dhaka

# Picture of Exhibition



DTG - 2019, Dhaka, Bangladesh at ICCB



DTG - 2024, Dhaka, Bangladesh at ICCB



Yellow Page Expo- 2018 Mar, Dhaka, Bangladesh at BICC



DTG-16th 2019 Jan, Dhaka, Bangladesh at ICCB



Mr. Helal Uddin, Chairman & Mr. Afsar Uddin, CEO of Alo Bitan at Taipei 101, Taiwan



Mr. Helal Uddin, Chairman & Mr. Afsar Uddin, CEO of Alo Bitan visiting for the 20th Anniversary of MIKRO, Malaysia.



Mr. Helal Uddin, Chairman of Alo Bitan Taking award from Mr. Mozammel Haque of Bangladesh Minister for Liberation War Affairs at BICC, 2018 March

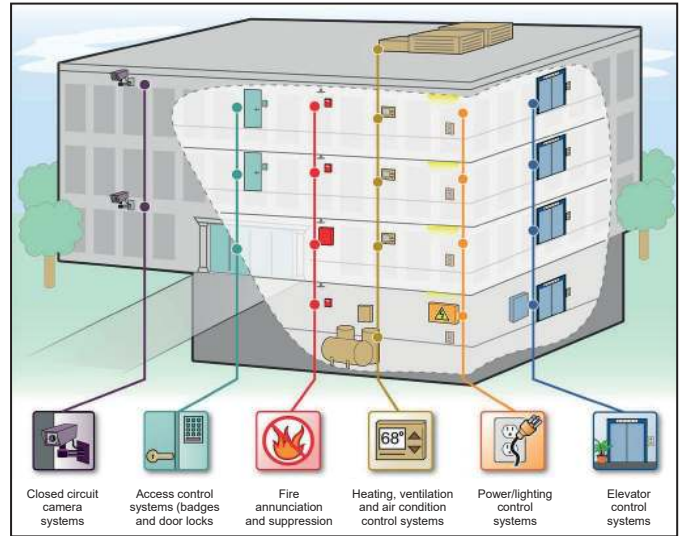


Power GEN -2022 October, Dhaka, Bangladesh at ICCB

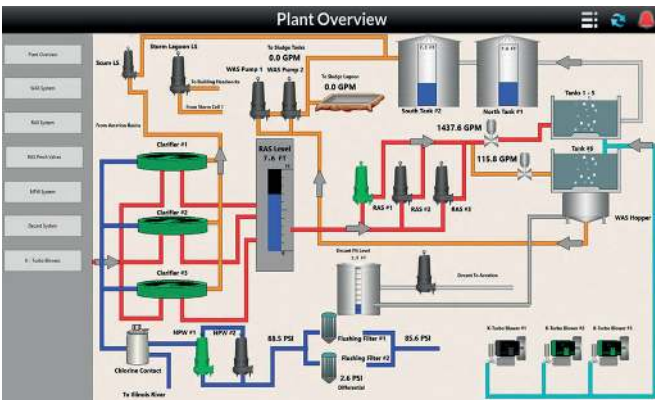




**Industrial Substation Automation**



**Building Management System**



**Pump Monitoring Scada**



**Booster Pump**



◀ **Mixture Machine 260kW Inverter**  
 ALO BITAN has established itself as a paradigm of quality & perfection in the field of Sales & Service of Automation Panel Over Drive & PLC Panel are working in almost all industries

**Drive & PLC Panels**



**Textile Machine Driven by Hitachi Inverter**



**CNG Station 260kW Hitachi Inverter**

# SOME PROJECTS REFERENCE LISTS

## Group of Industries

No.	Project Name	Application
1	Aftab Group	ATS Panel, DB, PFI, General Electric Goods
2	Akij Group	315kw Inverter, Capacitor and Electric goods
3	Aman Group	Inverter, General Electric Goods
4	Anwar Group	Inverter, Circuit Breaker, Electric Product
5	AB Group	Inverer, General Electric Goods
6	Badsha Group	Inverter, General Electric Goods
7	Basundhara Group	Inverter, General Electric Goods
8	Beximco Group	PLC Automation Work
9	Crony Group	Energy Monitoring System
10	City Group	Inverter, General Electric Goods
11	DeshBandhu Group	Stablizer, General Electrical Goods
12	Echo Tex Group	DB, PFI, General Electric Goods
13	Fakir Group	DB, PFI, General Electric Goods
14	Hameem Group	Inverter, General Electric Goods
15	Ispahani Group	Substation Equipment, Inverter, Electric Goods
16	Jamuna Group	Inverter, General Electric Goods
17	Karim Group	Substation Equipment, Inverter, Electric Goods
18	Madina Group	Substation Equipment, Inverter, Electric Goods
19	Meghna Group	Inverter, Softstarter, General Electric Goods
20	MetroCem Group	Substation Equipment, Inverter, Electric Goods
21	MSA Group	Inverter, General Electric Goods
22	Mondol Group	Inverter, General Electric Goods
23	Mosharaf Group	Inverter, General Electric Goods
24	Mashati Group	Inverter, General Electric Goods
25	Naheed Group	Inverter, PLC, Electric Goods
26	Nassa Group	Inverter, General Electric Goods
27	Noman Group	Inverter, Sensor, Substation, Electric Goods
28	NZ Group	Substation Equipment, Inverter, Electric Goods
29	NR Group	Inverter, General Electric Goods
30	Osman Group	Inverer, General Electric Goods
31	Partex Group	Substation Equipment, Inverter, Electric Goods
32	Pran-RFL Group	Substation Equipment, Inverter, Electric Goods
33	Purbani Group	Inverter, General Electric Goods
34	Shepherd Group	Inverter, General Electric Goods
35	TK Group	PFI, General Electric Goods
36	Salma Group	PFI, General Electric Goods
37	Sinha Group	Inverer, General Electric Goods.
38	SM Group	Inverer, General Electric Goods
39	Urmi Group	Inverer, General Electric Goods
40	Youth Group	Inverer, General Electric Goods

## Textile Industries

41	Adnan Textile	Substation Equipment, Inverter, Electric Goods
42	AGC Spinning	PFI, General Electric Goods
43	Ashik Composit	Inverter, General Electric Goods
44	Asia Composit	Inverter, General Electric Goods
45	Far East Spinning	450Kw Inverter, General Electric Goods
46	RingShine Textile	Inverter, General Electric Goods
47	Sanjana Fabrics	Automation, Inverter, General Electric Goods

No.	Project Name	Application
48	Tara Spinning	Inverter, General Electric Goods
49	Knit Cotton	Inverter, General Electric Goods
50	Techno Textile	Inverter, General Electric Goods
51	Thermax Spinning	Inverter, General Electric Goods
52	Unimex Textile	Inverter, General Electric Goods
53	Envoy Textile	Inverter, General Electric Goods
54	Prime Textile	Inverter, General Electric Goods
55	Mubarak Spinning	Inverter, General Electric Goods
56	Nagrana Spinning	Inverter, General Electric Goods
57	Al Razi Spining	Inverter, General Electric Goods

## Engineering Company

58	EnergyPac Enginee.	General Electric Goods
59	Pran-RFL Group	General Electric Goods
60	System Engineering	General Electric Goods
61	Powermann	General Electric Goods
62	Mampower	General Electric Goods
63	Dana Engineering	General Electric Goods
64	Reverie Power	General Electric Goods
65	Efficient Power	General Electric Goods
66	Satco Electric	General Electric Goods
67	TNS Engineering	General Electric Goods
68	Mega Star	General Electric Goods
69	Power Plus Enginee.	General Electric Goods
70	Mech Power	General Electric Goods
71	Western Engineering	General Electric Goods
72	Marshal Engineering	General Electric Goods
73	Gazi International	Inverter, General Electric Goods
74	Sohel & Brothers	Inverter, General Electric Goods

## Other Company

75	BSRM Steel	2500AATS Panel, General Electric Goods
76	Salam Steel	PFI, Substation Equipment
77	Zahir Steel	PFI, Inverter Panle, General Electric Goods
78	Baized Steel	PFI, General Electric Goods
79	Sadek CNG	260Kw Inverter
80	NS CNG	Inverter, General Electric Goods
81	Priyo Auto Bricks	Inverter, General Electric Goods
82	Advance Tech	Inverter, General Electric Goods
83	Nova Auto Bricks	Inverter, General Electric Goods
84	Crown Cement	Substation Equipment, Electric Goods
85	SCM Cement	Substation Equipment, Electric Goods
86	ChinaBangla Ceramic	Inverter, General Electric Goods
87	Monno Ceramics	Substation Equipment, Electric Goods
88	SSRM Steel	MDB, SDB, General Electric Goods
89	CSRM Steel	PFI, General Electric Goods
90	Bangladesh Bank	4000AATS, General Electric Goods
91	Medicon Pherma	Inverter,Substation Equipment,Electric Goods
92	Shah Cement	Inverter, General Electric Goods
93	Seven Rings Cement	Inverter, General Electric Goods

# Awards & Achievements



# Our Esteemed Clients

## Textile



## Steel



## Cement

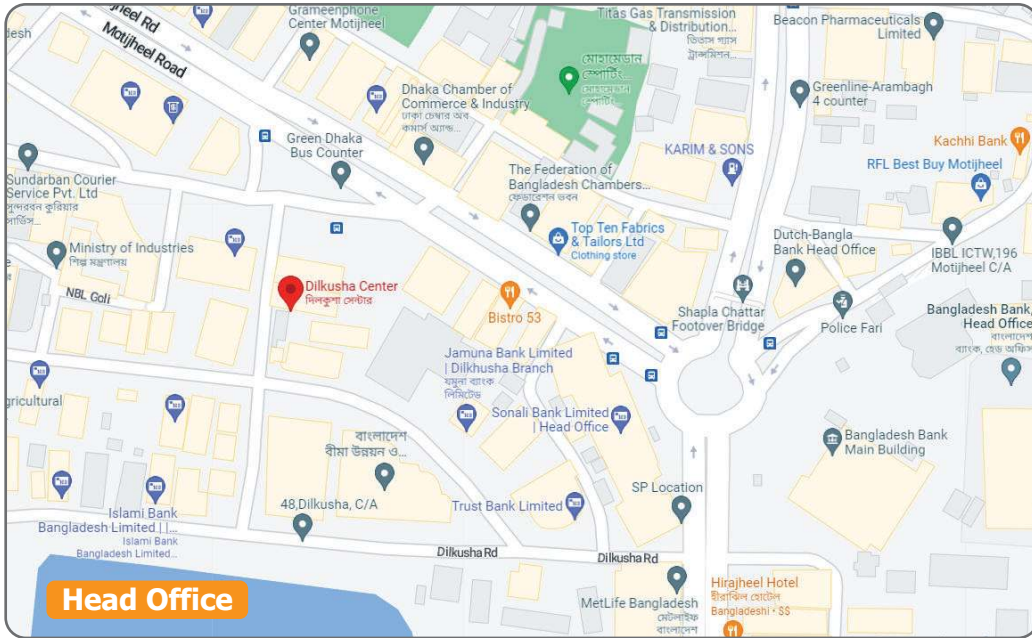


## Food and Beverage

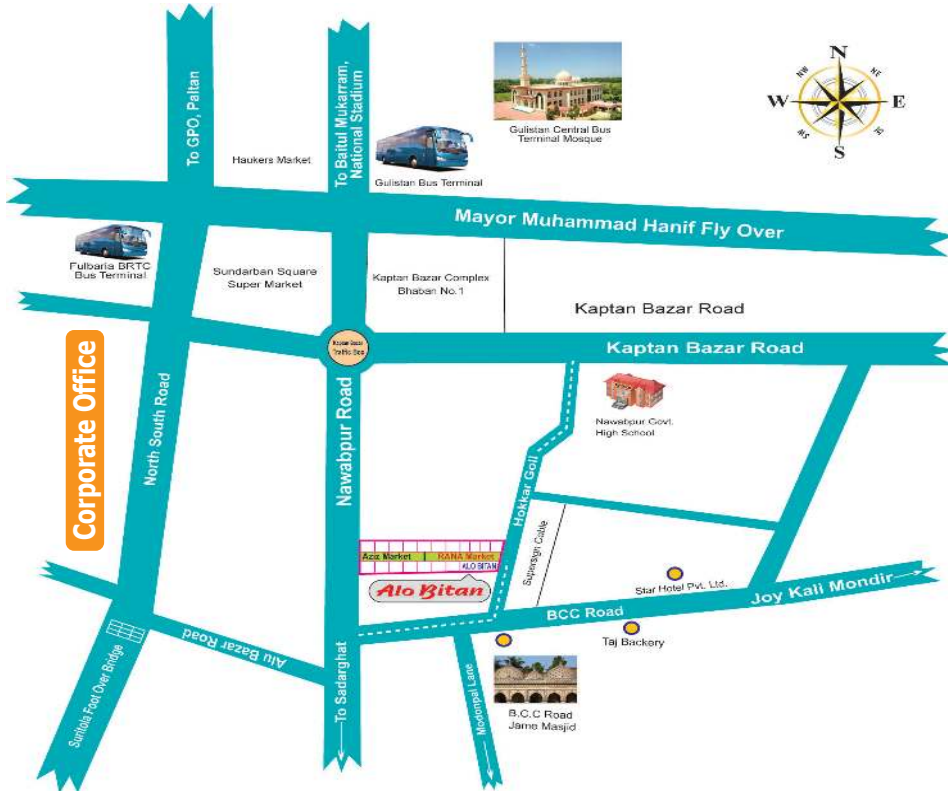


## Others





**Head Office**



### Show Room :

131, B.C.C Road, Rana Market, Nawabpur, Dhaka-1203, Bangladesh.  
Tel : +88 02 4711 5085, 951 2001, Mobile : +088 1711 548558, 01715 198443

### Corporate Office :

131, B.C.C Road, Rana Market (2nd Floor), Nawabpur, Dhaka-1203, Bangladesh.  
Tel : +88 02 951 2001, Mobile : +88 01715 198443, E-mail : alobitan1@gmail.com

### Head Office :

28, Dilkusha Center (5th Floor), Dilkusha C/A, Motijheel, Dhaka-1000, Bangladesh.  
Tel/Fax : +88 02 4712 1312, Mobile : +088 1711 548558, E-mail : info@alobitanbd.com

### Factory :

79/10, Kazlarpar, Bir-Muktijoddha Mozzaffar Sarak, Jatrabari, Dhaka-1236, Bangladesh.  
Tel : +88 02 7541714, Mobile : +88 01718 421254, 01755 699978

